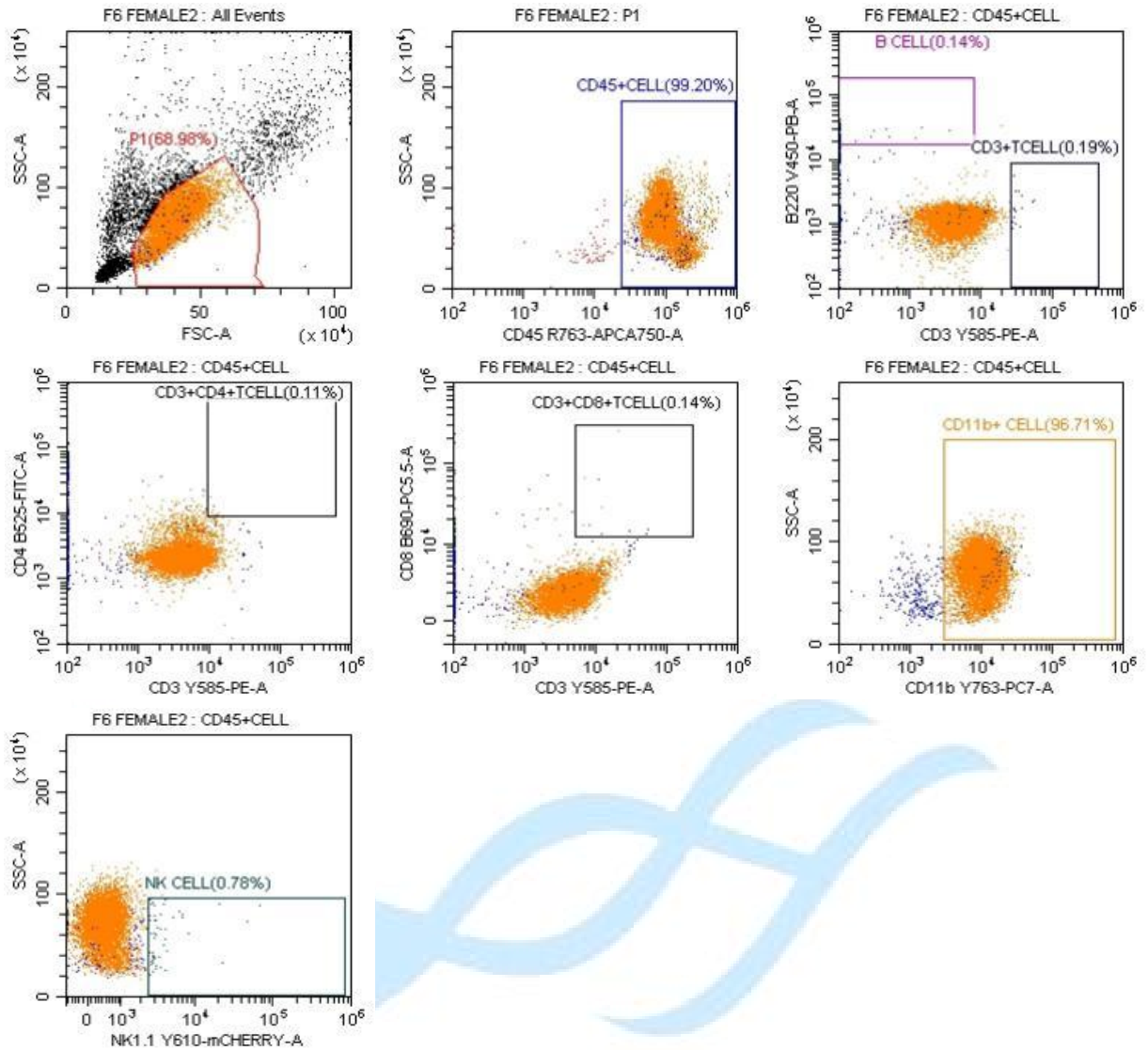


NOD.Cg-Prkdc<sup>scid</sup>Il2rg<sup>null</sup>/Shjh 小鼠流式细胞分析结果  
Flow Cytometer detection of NOD.Cg-Prkdc<sup>scid</sup>Il2rg<sup>null</sup>/Shjh mice



Tube Name: F6 FEMALE2

Sample ID:

Population	Events	% Total	% Parent
All Events	11666	100.00%	100.00%
P1	8047	68.98%	68.98%
CD45+CELL	7983	68.43%	99.20%
⊗CD3+CD4+TCELL	9	0.08%	0.11%
⊗CD3+CD8+TCELL	11	0.09%	0.14%
●CD11b+ CELL	7720	66.18%	96.71%
●NK CELL	62	0.53%	0.78%
●B CELL	11	0.09%	0.14%
CD3+TCELL	15	0.13%	0.19%
⊗Q1-UR	0	0.00%	0.00%